



**“HAVE A
NICE DAY**



HENRO·TEK



**“FOCUS
ON THE GOOD
EXPERIENCE**

HENRO·TEK

The good experience

Turning difficulties into good experiences is our mission. Whenever it is possible, disabilities must be helped, preferably with good functionality in a beautiful design.



Who is Henro-Tek

We develop and produce ergonomic, CE marked helping aids. Helping aids that have high functionality, great strength and are dishwasher safe.

The oblique cup

Since the cup is oblique, it is easy to drink from if you are bedridden or unable to bend the neck. The large handles secure a good grip, if you have reduced strength or lesser coordination skills in your hands.



The bent cutlery

The cutlery has been shaped in cooperation with occupational therapists with one simple purpose in mind, making it as easy as possible for people with motoric difficulties to eat by themselves.

The microwave safe plate

The plate accompanies you perfectly in your meal, with one low edge and one high edge that makes the food easy to grab with one hand. In addition, the plate has small non-slip removable rubber feet.



HANDY·CUP®

The Handycup is produced in transparent clear Polycarbonate so contents are visible. It is available with or without ml.

The Handycup® is also available in transparent coloured Polycarbonate in red, blue and green. A clear advantage when you need to be able to differentiate between contents or users.

Handycup® is for adults as well as children, durable in use and dishwasher as well as microwave safe. The utility temperature is between -20 °C and +95 °C.

The oblique cup

Since the cup is oblique, it is easy to drink from if you are bedridden or unable to bend the neck. The large handles secure a good grip, if you have reduced strength or lesser coordination skills in your hands.





HENRO-GRIP®

Henro-Grip® Kids fit children up to 8 years. The blue spoon and spork are for right handed, and the green spoon and spork are for left handed.

You can eat with the bent cutlery with minimal bending of the arm and wrist. A steady grip on the cutlery completes the comfortable experience of being in control with the situation.

Henro-Grip® with the ergonomic grip and bent design is available in dark grey and red.

The red colour is an extra advantage for young people with autism and elder people with dementia or Alzheimer.



The bent cutlery

The cutlery has been shaped in cooperation with occupational therapists with one simple purpose in mind, making it as easy as possible for people with motoric difficulties to eat by themselves.

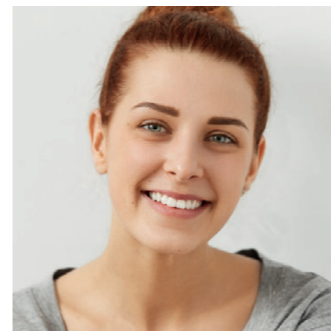
The ingenious knife

The knife has been shaped in cooperation with occupational therapists with one simple purpose in mind, making it as easy as possible for people with motoric difficulties to eat by themselves.



HENRO-STRAP®

The elastic keeps has been shaped to hold the cutlery in hand throughout the meal. It's easy to adjust, and it fits the entire cutlery range as well as other hand tools.



The microwave safe plate

The plate accompanies you perfectly in your meal. With one low edge and one high edge, you can easily grab the food with one hand. In addition, the plate has small non-slip removable rubber feet.



HENRO-PLATE®

You can enjoy your meal comfortably since the plate will stand firmly on the table with its anti-slip rubber feet, so firmly that you can eat with just one hand.

The shape makes getting to the food easy, and the larger edge at one side enables pushing the food to this side and thus eating it by one hand. It is deep enough to contain porridge or soup.

With a utility temperature from 0-100°C you can heat your food directly on the Henro-Plate in the microwave and put it in the dish washer when you are finished eating.

Henro-Plate is available in white with small rubber feet to be attached on the bottom. The feet have anti-slip function for the plate to stand firmly on the table.



The curved deck of cards

The playing card holder is a gift for dedicated card players with great gambling desires but low strength in hands and fingers.



HENRO-CARD®

The playing card holder is firmly placed on the table so reduced strength or control in hands or fingers is no obstacle for a game of cards.

Once the cards have been placed in Henro-Card they are easy to handle, and the curved shape gives you a good overview without your fellow players being able to watch

Henro-Card is produced light weight plastic, and it is available in white.



Product overview

HANDY-CUP®

1310.800 Clear
1310.802 Green
1310.801 Blue
1310.803 Red
1310.822 Clear m/ ml
1310.822 ICP

HENRO-GRIP® Kid

1520.100 Spork Blue RIGHT
1520.200 Spoon Blue RIGHT
1520.110 Spork Green LEFT
1520.210 Spoon Green LEFT

HENRO-GRIP® Junior

1520.320 Fork Grey RIGHT
1520.420 Spoon Grey RIGHT
1520.340 Fork Grey LEFT
1520.440 Spoon Grey LEFT
1520.300 Knife Grey
1520.360 Fork Red RIGHT
1520.460 Spoon Red RIGHT
1520.380 Fork Red LEFT
1520.480 Spoon Red LEFT
1520.400 Knife Red

1600.100 HENRO-CARD®
1400.100 HENRO-PLATE
1500.001 HENRO-STRAP

HENRO-TEK

